

D2 series



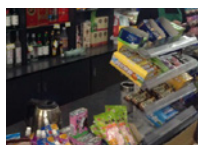
Your Best Choice in small footprint direct-thermal printer



Best Label-saving Protocol!



Before



Working bench has no luxury room for bulky printer so things are all cramped together.

After



Compact design of D2 fits nicely on your working bench and makes your work a pleasant experience.

Application



Healthcare



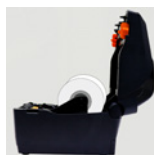
Ticket



Retail



Feature-rich to make daily work simple and easy



Clamshell design, easy load

The D2 series features a user-friendly clamshell design that allows users to simply open the cover and loading ribbon and media.



Up to 7-inch per second Printing Speed

Featuring 7-ips printing speed. No compromised printing quality even run at the maximum speed.



Seamless-converting to Argox printers!

Automatic Language Emulation Detection

Automatic adopting commonly used printer control languages for maximized user friendliness. (Auto-Detection & Auto-Conversion)

*Sales representative for demonstration video.



Enhanced connectivity

The D2 series has built-in USB host, USB device, and it can be expanded with Ethernet/RS232, Wi-Fi, Bluetooth.

Print Specifications	D2-250	D2-350
Printing Method	Direct Thermal	
Printing Resolution	203 dpi (8 dots/mm)	300 dpi (12 dots/mm)
Printing Speed	Max. 7 ips	Max. 5 ips
Printing Length	Max. 100”(2540 mm)	Max. 50”(1270 mm)
Printing Width	Max. 2.13”(54 mm)	Max. 2.24”(56.9 mm)
Memory	32 MB SDRAM, 16MB Flash ROM (USB storage up to 32GB)	
CPU Type	32 bit RISC microprocessor	
Consumables Specifications		
Sensors	Reflective sensor x 1 (movable) & Transmissive sensor x 1 (fixed, 6.27mm offset)	
Media Type	Roll-feed, die-cut, continuous, fan-fold, black mark, tags, ticket in thermal paper or plain paper	
Media	Max. width 60mm. Min. width 12mm. Media thickness: 0.06~0.2mm 5”(127mm) OD on a 1”/1.5” (25.4/38 mm) ID core; 4.5”(114mm) OD on a 0.5” (12.7mm) ID core	
Fonts & Symbolologies		
Fonts	Internal character sets standard 5 alpha-numeric fonts from 0.049”H ~ 0.23” H (1.25mm ~ 6.0mm) Internal fonts are expandable up to 24x24 4 direction 0 ~ 270 rotation Soft fonts are downloadable Ability to print any Windows True Type font easily. Support scalable font	
1D Barcodes	UPC-A, UPC-E, JAN/EAN, CODE39, CODE93, CODE128, GS1-128 (UCC/EAN128), CODABAR (NW-7), ITF, Industrial 2of5, MSI, UPCCadd-on code, POSTNET, GS1 DataBar Omnidirectional, GS1 DataBar Truncated, GS1 DataBar Stacked, GS1 DataBar Stacked Omnidirecional, GS1DataBar Limited, GS1 DataBar Expanded, GS1DataBar Expanded Stacked	
2D Barcodes	QR Code, PDF417 (includingMicroPDF), DataMatrix (ECC200), GS1 DataMatrix, MaxiCode	
Graphics	PPLA: PCX, BMP, IMG, HEX,GDI PPLB: PCX, BMP, Binary raster, GDI PPLZ: GRF, Hex, GDI	
Emulation	PPLA, PPLB, PPLZ	
Interface Characteristics and Integration		
Operation Interface	LED Indicator x 2, Button(Feed) x 1	
Communication Interface	USB device, USB host	
Drivers	Windows Driver for Vista/Win7/Win8/Win10, LINUX Driver, macOS Driver, Raspberry Pi Driver	
Software	BarTender, Printer Tool	
Database Link	Argobar Pro support ODBC Database Connection: Excel, CSV, MS Access, MS SQL, Oracle MySQL, dBASE (*.dbf)	
Operating & Environment Characteristics		
Power Source	Universal Switching Power supply. AC input voltage: 100~240V, 50~60Hz. DC Output: 24V, 2.5A	
Operation Environment	Operation Temperature: 41°F~104°F (5°C~40°C), 0% ~ 90% non-condensing, Storage Temperature: -4°F~122°F (-20°C~50°C)	
Agency Listing	CE, FCC, cTUVus, Energy Star, CCC, RoHS, BSMI, RCM, CB, BIS	
Physical Characteristics		
Printer Dimensions	W 116mm x H 170mm x D 215mm	
Printer Weight	2.31 lbs (1.05 kg)	

*Argox reserves the right to enhance and modify the specification without prior notice.
Please check Argox sales representative for most updated specifications.

Optional Items



Full/partial cutter,
guillotine-type



Peeler



WLAN



Bluetooth



RS-232



Ethernet

ACRC
ARGOX Certified Repair Centers

Consult your local Argox business
partners for location and contacts.

Argox Information Co., Ltd.

7F., No.126, Ln.235, Baoqiao Rd., Xindian Dist., New Taipei City 231, Taiwan (R.O.C.)

Tel: +886-2-8912-1121 Fax: +886-2-8912-1124 <https://www.argox.com> <https://www.youtube.com/user/argoxmkt> email: service@argox.com

Copyright © 2018. Argox Information Co., Ltd. All Rights Reserved.

